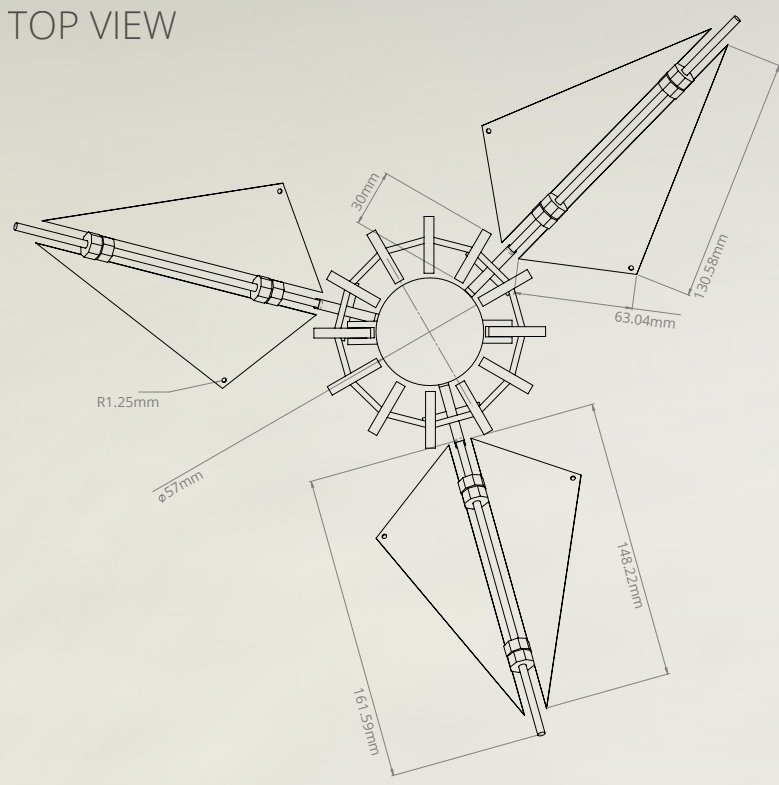
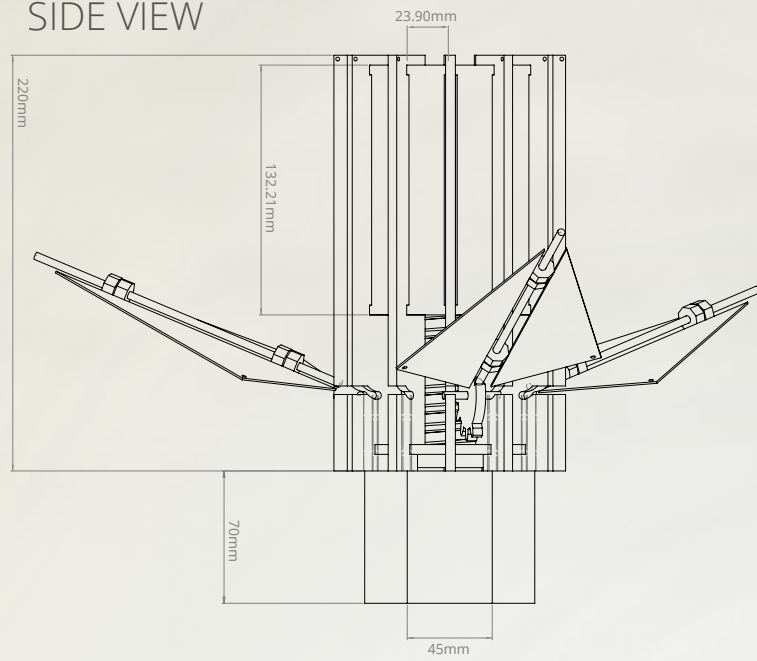


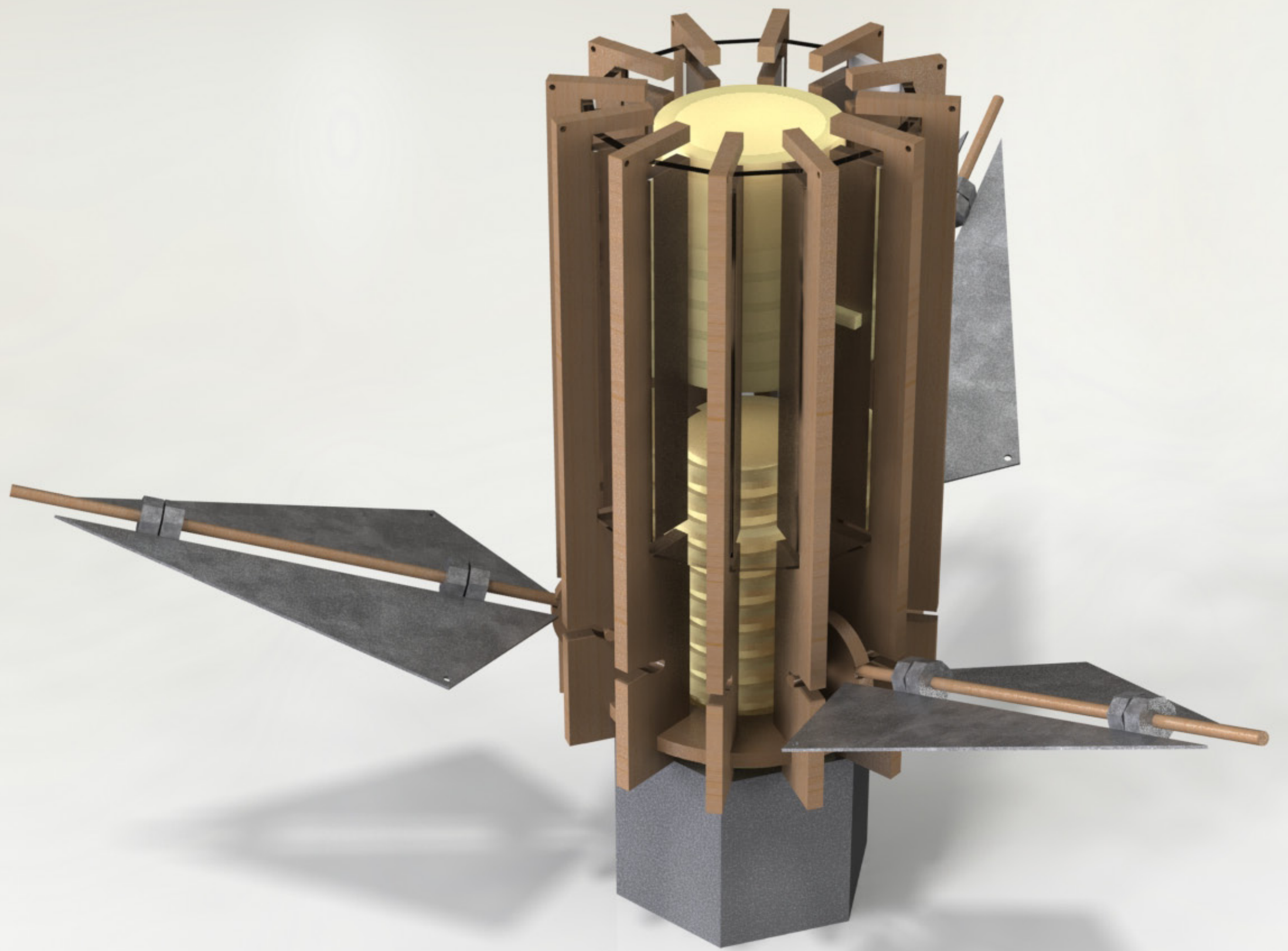
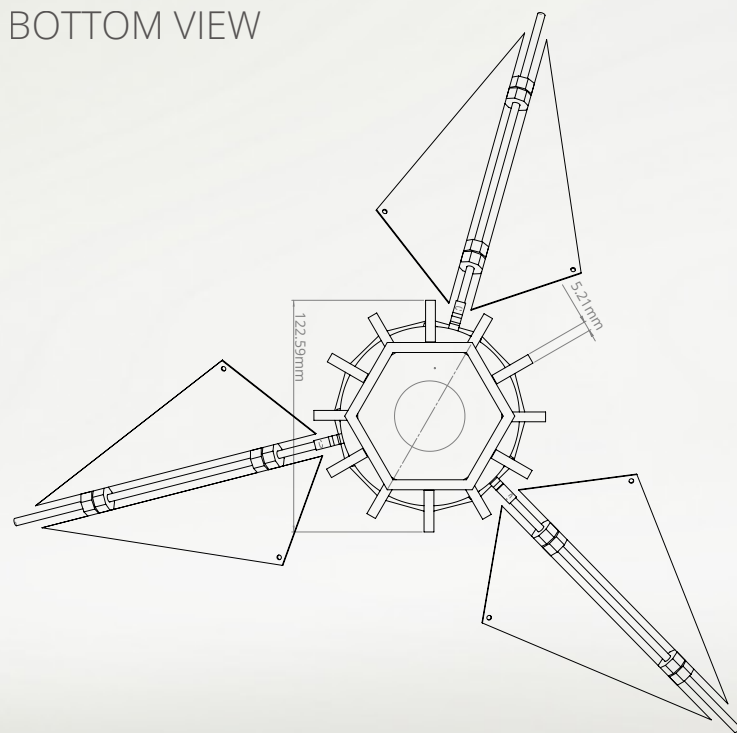
TOP VIEW



SIDE VIEW



BOTTOM VIEW



## ILLUMINAUT PRIME

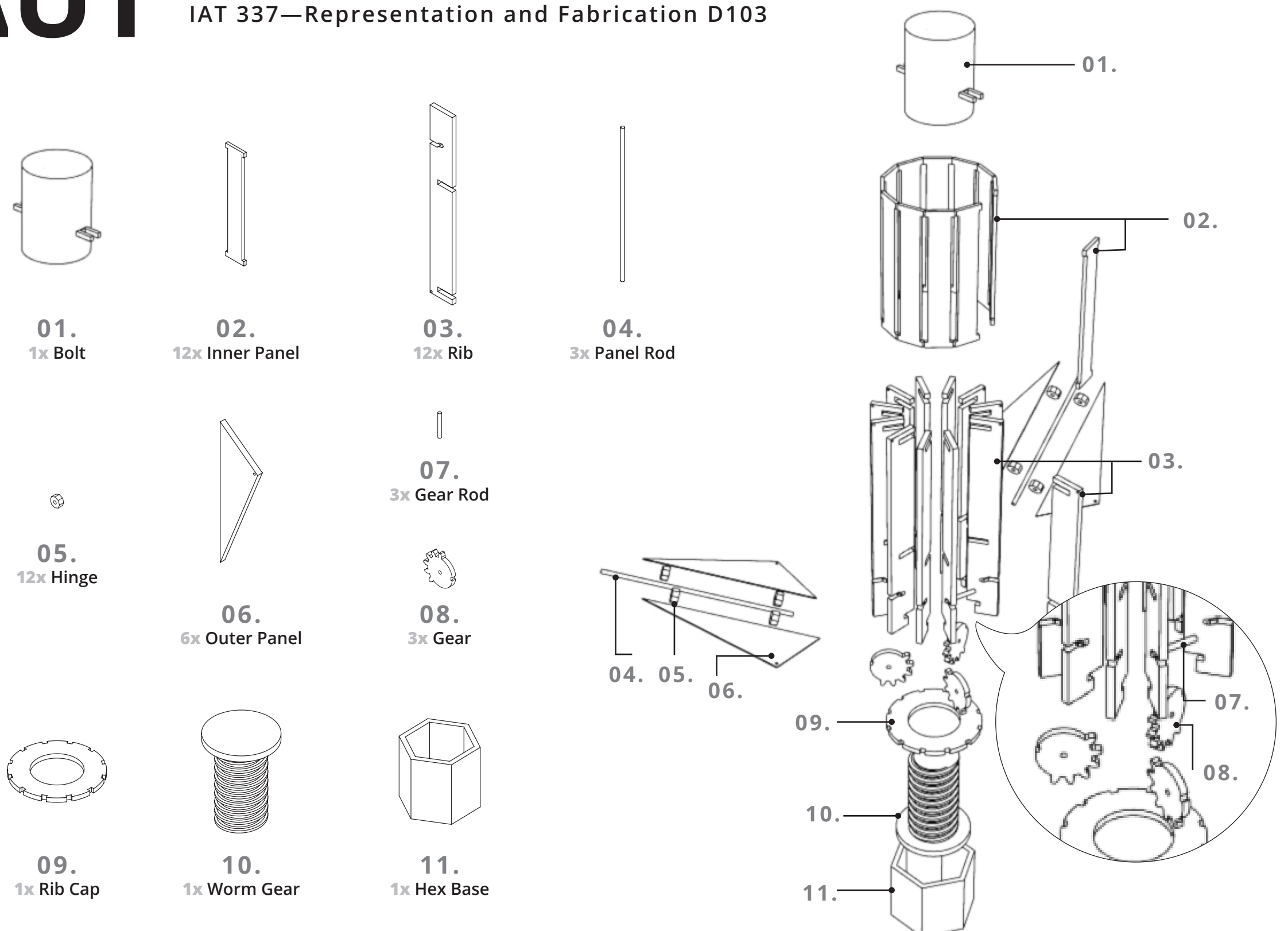
# ILLUMINAUT

Janelynn Chan | Glen Cheng | Dennis Wong | Janine Wong  
IAT 337—Representation and Fabrication D103

Illuminaut is a kinetic sculpture aimed to “shed light,” so to speak, on the issue of light pollution. The end goal is not to solve the problem of light pollution because it is an issue too large of a scope, but instead, to raise awareness of the problem occurring around us. Illuminaut is designed to be a metaphorical wall which represents the upward direction of artificial light to the night sky.

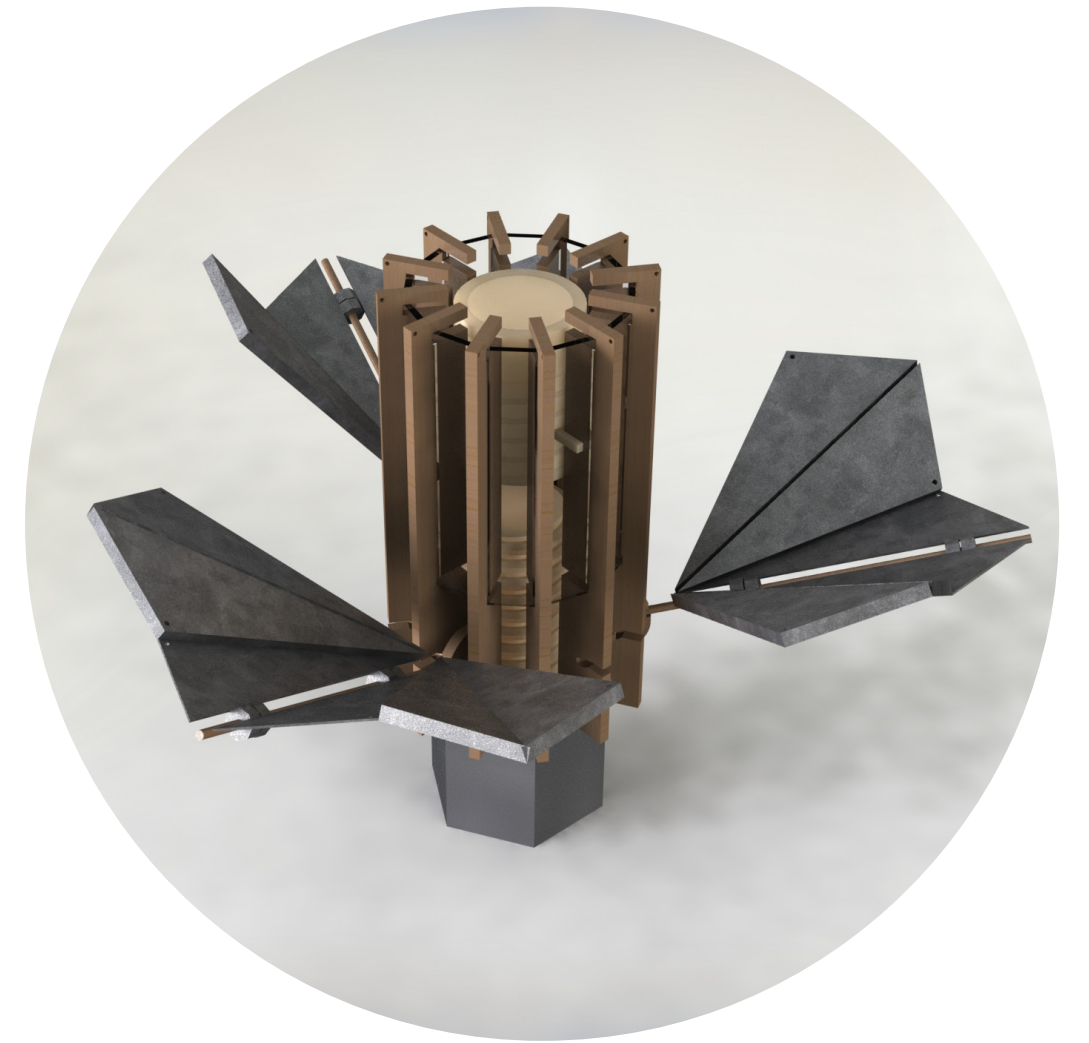
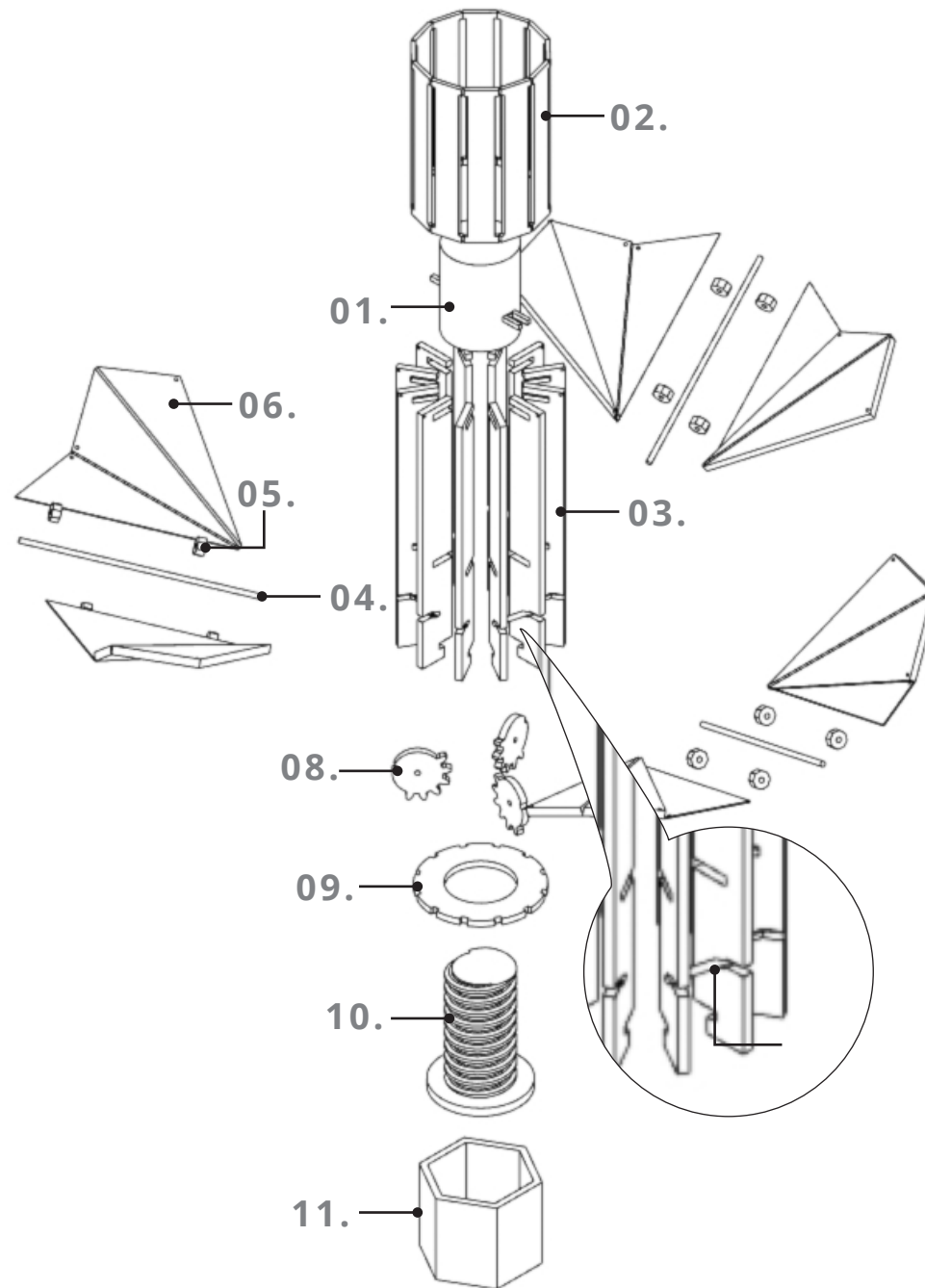
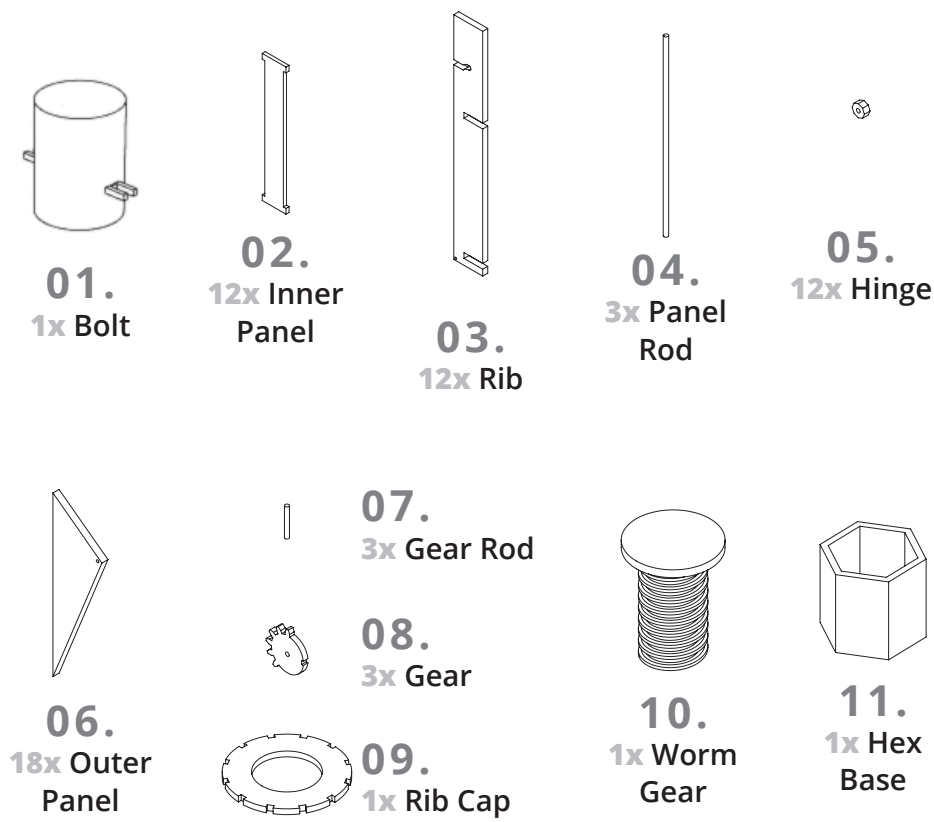
In mainly cities, light pollution is a problem that not many people are aware of because they are so engrossed in a tech savvy world. It is excessive and misdirected upward artificial light towards the sky with side effects such as harming people living in the area, wasting energy, and harming the environment.

Downtown residents in Vancouver have complained about bright lights coming from buildings and billboard ads, with some even seeing red from the intense lights. This problem is called blinding glare and can lead to reduction in sight capabilities.



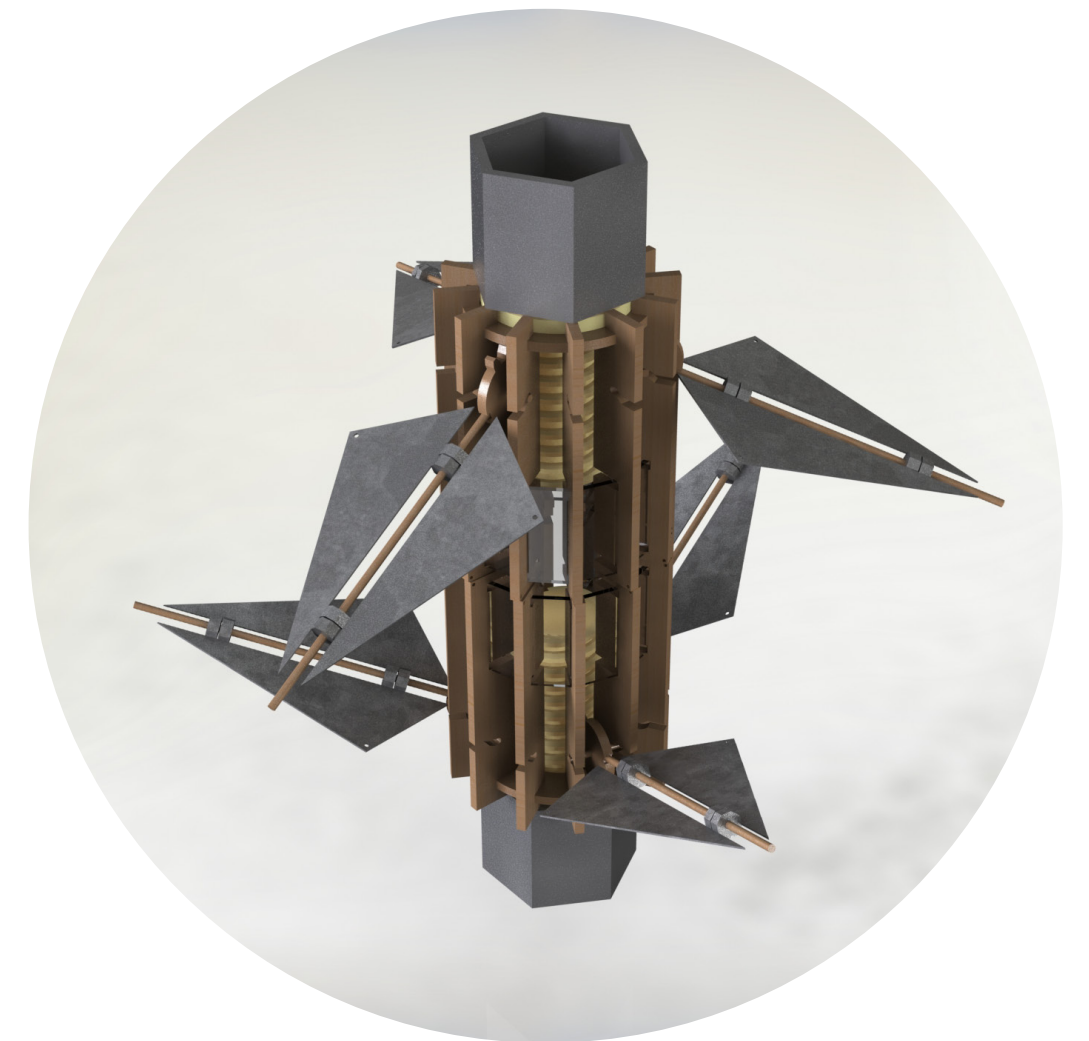
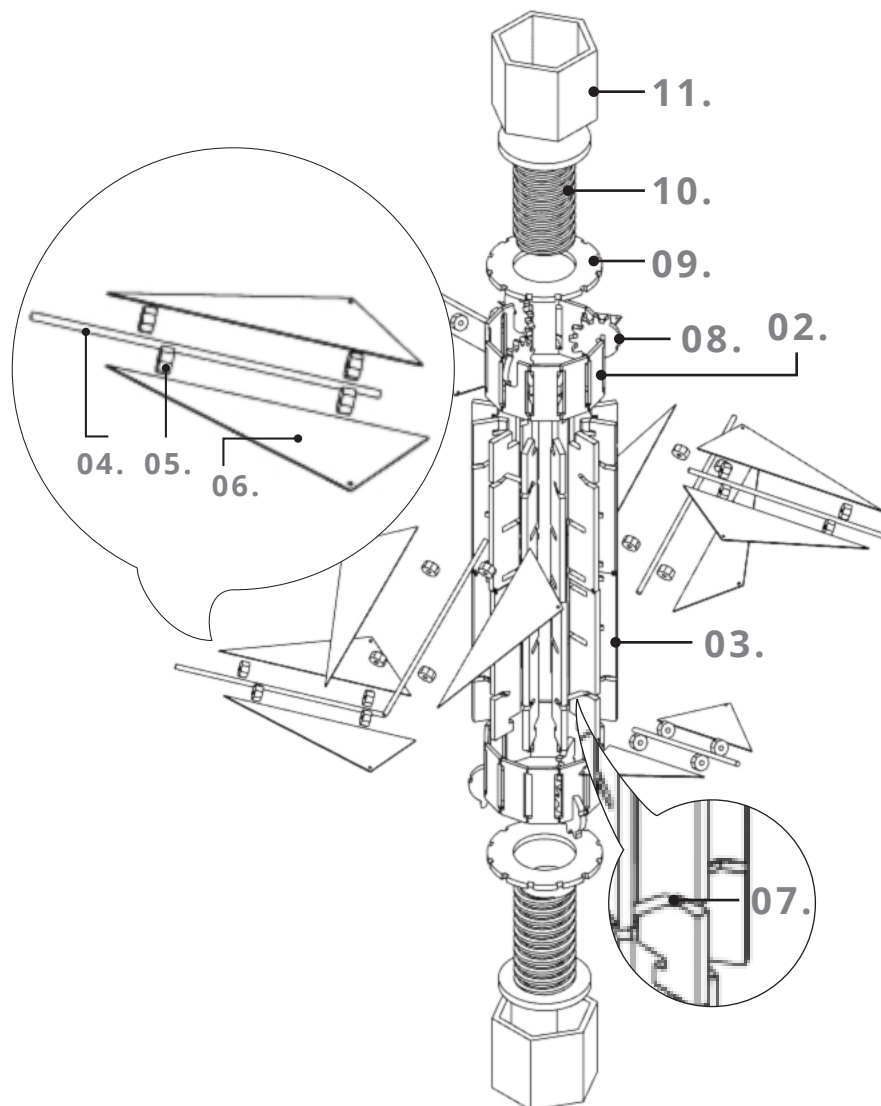
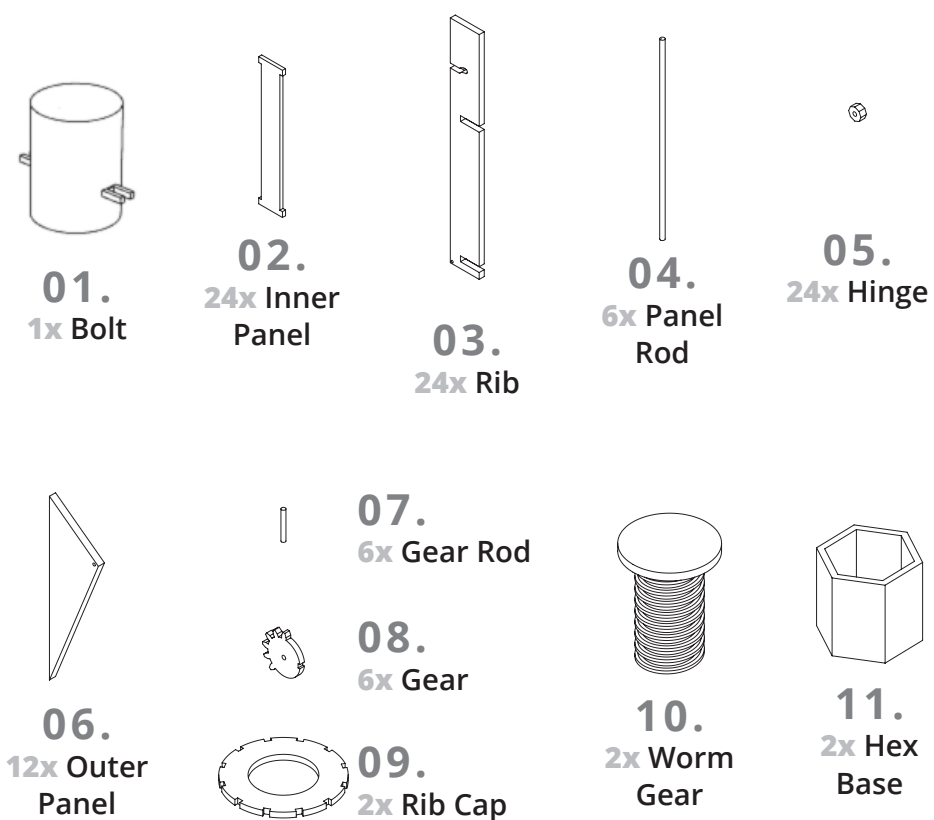
# ILLUMINAUT SUPERNOVA

Like a supernova star suddenly increasing in brightness and mass, Illuminaut Supernova has an increase in size and multitude of panels to greatly reflect more light.



# ILLUMINAUT BINARY STAR

Shimmering twin bodies sparkling in unison around each other, the doubled panels and bodies of Illuminaut Binary Star reflects light off one another to encapsulate light.



# ILLUMINAUT NEBULA

Clusters of inverted Illuminaut Primes suspend from lobby ceilings to form a glittering sight. Utilizing proximity sensors, movement of panel clusters and lights in larger forms are activated by passerbys below.

