

# “We Need To Be At The Table”: Collaboration With Lived Experts

Presented by: Sarah L. Canham

Co-Authors: Rachel Weldrick, Anne Cartledge, Hilary Chapple, Chris Danielsen, Dorothy Kestle, & Samantha Teichman

The Gerontological Society of America Conference, Seattle, WA

November 14, 2024



# Acknowledgements

## Land

We respectfully acknowledge that the University of Utah is located on the traditional and ancestral homelands of the Shoshone, Paiute, Goshute, and Ute Tribes, and that Simon Fraser University is located on unceded and traditional territories of the Musqueam, Squamish and Tsleil-Waututh Nations.



## Funders

## Researchers

We would also like to acknowledge contributions to this project from Gracen Bookmyer, Marianne Bordeleau, Emilie Cormier, Alison Grittner, Jill Holsten, and Rachelle Patille.

I have no commercial relationships to disclose.



## Partners

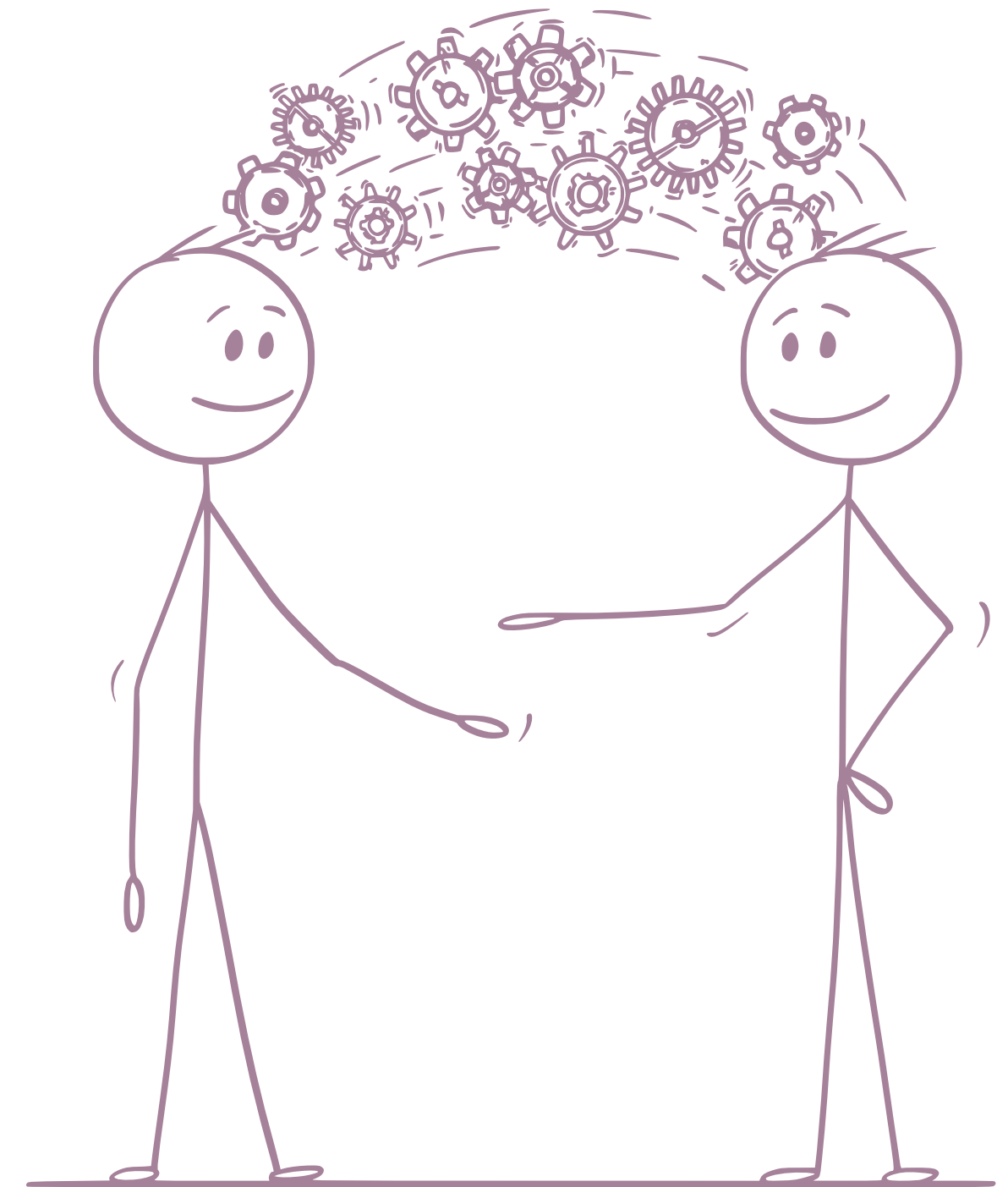
# Background and Objectives

---

Lived experts are increasingly recognized by researchers/funding agencies as crucial research partners.

Lived experts are the most knowledgeable about the impacts of conditions and interventions on their lives.

This presentation presents an example of a LE advisory group that co-conceptualized and executed a knowledge mobilization project on aging and homelessness within three Canadian cities (Vancouver, Calgary, and Montreal).



# Methods

---



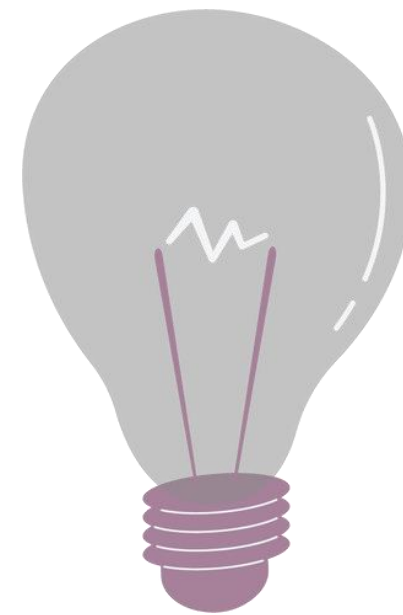
Established the Lived  
Expertise Advisory  
Committee

# Methods

---



Established the Lived  
Expertise Advisory  
Committee



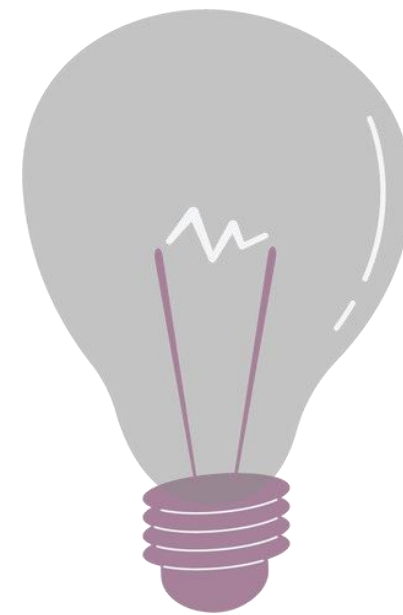
Set goals, expectations,  
and objectives

# Methods

---



Established the Lived  
Expertise Advisory  
Committee



Set goals, expectations,  
and objectives



Community events, webinar, and  
stereotype cards











Canham, S.L., Weldrick, R., Cartledge, A., Chapple, H., Danielsen, C., Kestle, D., Gauthier, M., & Teichman, S. (2024). "We need to be at the table": Collaboration with lived experts. *Progress in Community Health Partnerships: Research, Education, and Action*.

# Conclusion

---

Lessons learned from this project will enhance our future knowledge mobilization efforts.

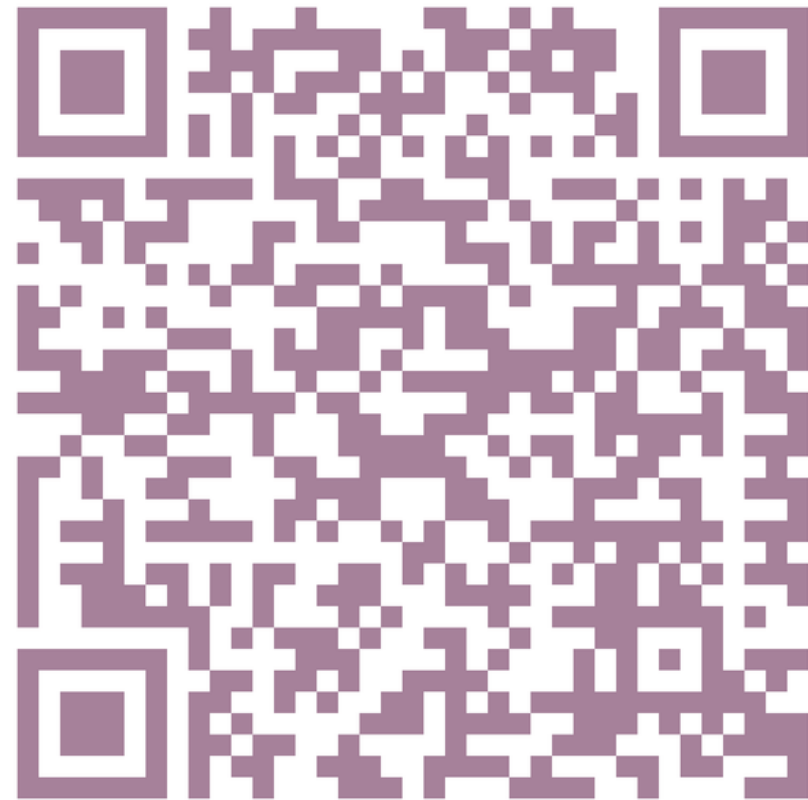
They can also serve as a guide for other community-based research partnerships with lived expert advisors, ensuring more effective and impactful collaborations moving forward.



# Thank You

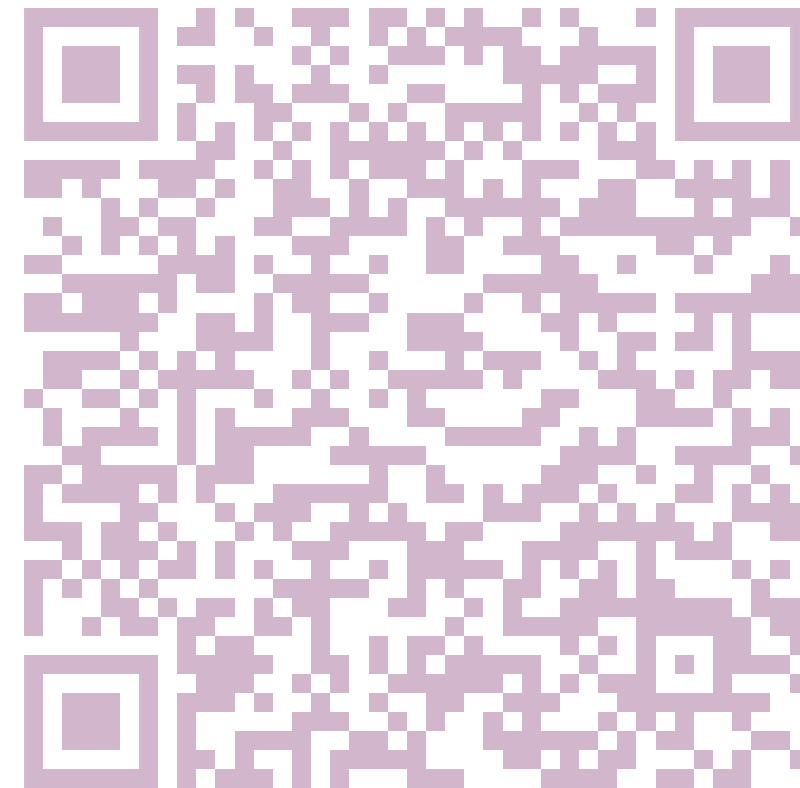
---

[Link to paper](#)



Canham, S.L., Weldrick, R., Cartledge, A., Chapple, H., Danielsen, C., Kestle, D., Gauthier, M., Teichman, S. (2024) “We need to be at the table”: Collaboration with lived experts. *Progress in Community Health Partnerships*. (Forthcoming.)

 LinkedIn



Find us on LinkedIn at  
“Aging In The Right Place |  
Vieillir au Bon Endroit”