

Graveyard Location Analysis

The Project

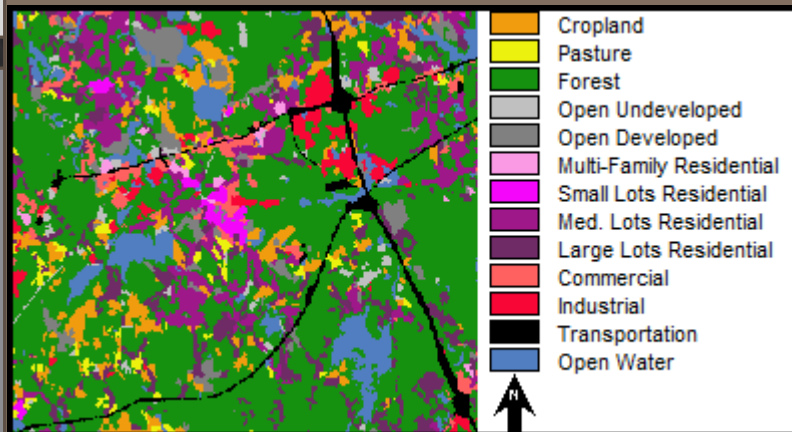
This project utilizes GIS technology to find the most suitable locations for a new graveyard in Westborough.

- Criteria were overlaid based on the Westborough landuse map.
- Analysis was conducted using a Boolean multi criteria evaluation.



CC Richard Hurd

Landuse in Westborough, MA, USA



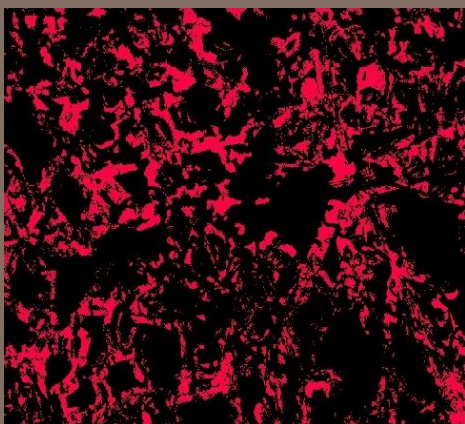
The Parameters

- Must be 250m away from open water to reduce water contamination.
- Must be within 200m of a road for vehicle access.
- Must be on a slope less than 20%.
- Must be 300m away from residential areas to reduce residents concerns about property value declines.

Sources:

- <http://www.doeni.gov.uk/niea/cemeteryguidance.pdf>
- <https://maps.google.ca/>
- <http://search.proquest.com/docview/374441207>
- [http://whqlibdoc.who.int/euro/1998-99/eur_icp_chna_01_04_01\(a\).pdf](http://whqlibdoc.who.int/euro/1998-99/eur_icp_chna_01_04_01(a).pdf)

Suitable Graveyard Locations



- Not suitable (Black)
- Suitable (Red)

Results

- The final results display all the suitable locations for graveyards in Westborough.
- The image to the left shows all the suitable areas in pink and non-suitable areas in black.